

# Why make a will?

## Why is making a will important?

Making a Will and keeping it up to date is the only way you can safeguard the future of those you care for. It is an opportunity to remember not only family but the friends and charities you hold dear.



## What will happen if I don't make a will?

If you don't make a Will, it is the law, not your family, that decides 'who gets what'. This can mean that your money is shared out between relatives you never intended to benefit, even the most distant relatives that claim against your estate.

Sorting out 'who gets what' can therefore be an expensive business and the legal costs will be paid from your estate. It can also take a long time, during which your loved ones may be left without support.

If you are without family and have not made a will, all your belongings will pass to the Crown. Your friends have no automatic claim by law and may well receive nothing.



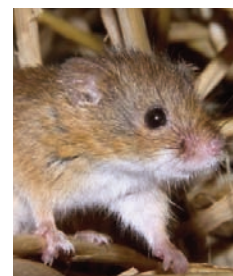
# Why Wildwood?

## Why should you give to Wildwood?



Wildwood Trust has at its heart a unique charitable vision to help restore areas for wildlife and recreate the true wildwood. Our education programme is giving future generations a true appreciation of the beauty of the natural world around them.

- We are a leading centre for environmental education in the South East helping to encourage children and young people to protect nature and wildlife
- We carry out important conservation work with captive breeding and reintroduction of endangered animals such as the Water Vole, Red Squirrels, Hazel Dormice, Harvest Mice and many more.
- We aim to conserve wildlife and wild places in Britain through the creation of woodland reserves where wild animals will be able to live in a secure haven, preventing their extinction.



# What will your money do?

## How your money will help?

Any gift left to Wildwood Trust is tax-free so the money that would have gone to the Inland Revenue will be spent on saving wildlife. Your gift, however large or small, will make a real difference for the future of Britain's wildlife.



- **£100** will buy fieldwork equipment for children to learn about wildlife and the environment.



- **£1,000** will enable us to buy a Konik pony to help us to continue our conservation grazing projects and protect wetland nature reserves around Kent and the South East.



- **£2,000** can help us build a captive breeding enclosure helping to save even more wildlife like the rare dormouse.

## What will your money do?



- **£5,000** can help pay for us to save a threatened population of red squirrels and take them to a safe new home.



- **£10,000** will pay for a water vole reintroduction, helping save the water vole, Britain's most endangered mammal, from extinction.



- **£25,000** will help build a new wolf enclosure.



- **£100,000** will buy and save a threatened woodland.

## What do you do now?



### What should you do now?

You now have the opportunity to do one of the following:

- **Attend** one of our legacy days where you will have the opportunity to learn all about legacy giving.
- **Request** our legacy booklet, which gives full information regarding legacy giving.
- **Speak or write** in confidence to Peter Smith, Wildwood's Chief Executive at the address below or on

**01227 712111**

**[peter@wildwoodtrust.org](mailto:peter@wildwoodtrust.org)**

to see how you can give to our important conservation work.



Kent's Unique Woodland Discovery Park

Wildwood Trust, Herne Common, Herne Bay,  
Kent, CT6 7LQ **Visitors Tel:** 0871 7820081

[info@wildwoodtrust.org](mailto:info@wildwoodtrust.org) [www.wildwoodtrust.org](http://www.wildwoodtrust.org)

**Registered Charity No. 1093702**

**Wildwood Legacy Leaflet**

**A Gift  
of  
Life...**

**Registered Charity No. 1093702**



**A gift to nature  
not the taxman**